

**KIT INCLUDES:**

2 Screws & 2 wall anchors

**TOOLS REQUIRED:**

Phillips screwdriver, drill, 7/32" drill bit and level.

Use a stud finder if choosing to drill into stud.

**NOTE:**

\* Do not use force when expanding and retracting holder.

\* Consult a professional if mounting to hard surfaces like tile.

\* Holder will expand to 22 inches.

\* From wall to toilet paper roll: 24 inches.

*Please keep away from children to avoid injuries.*

Grab the Extend a Roll from the stem behind the roll holder to extend and retract.

**Step 1.**

Extend the holder to the desired length before sitting down.

**Step 2.**

After you are finished either leave in place for future use or stand up and retract the same way.

**STEP 1:**

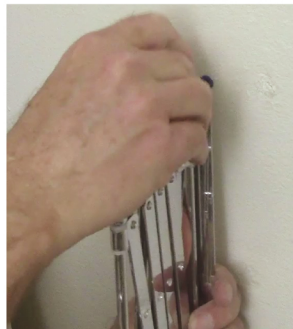
Expand holder to determine proper location. Then, mark the top hole.

**STEP 2:**

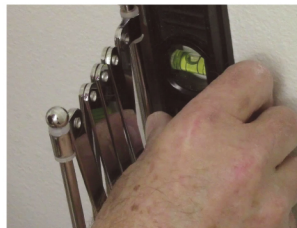
Drill hole to insert wall anchor. Use 7/32" drill bit.

**STEP 3:**

Insert anchor and mount the top screw to the holder. Do not screw in all the way.

**STEP 4:**

Level the holder to avoid side sway.

**STEP 5:**

Mark hole on the bottom and swing the holder to either side to drill the next hole. Mount anchor, place holder over hole and insert the screw.

**STEP 6:**

Tighten top and bottom screws. Expand the holder for a test fit. Done

